

A1DD* Quick install guide.

1. Overview.

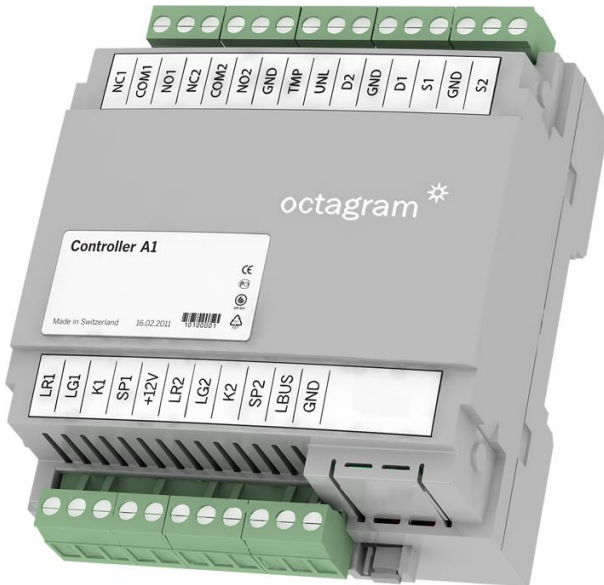
A1DD is a A1 series controller with preinstalled «DD» firmware.

Used for access control system. Controls up to two access points (like doors with electromagnetic or electromechanical locks).

Internal memory from 150 to 64000 keys/events (*- may vary and is shown by number from 0 to 64 in the name of the controller).

Type:	ACS door controller
Schedules :	64
Access types:	11
Time intervals:	3 per 24 hours period
Antipassback:	No
Photo ID mode:	Yes
Door sensors:	Yes
Internal keys/events:	150-64000
Key reader interface:	Dallas Touch Memory 1990A
NO/NC relays:	2
Power consumption	80 mA
Supply voltage:	12 V
Housing:	ABS plastic
Size:	95 x 90 x 48 mm

2. Appearance.



3. Connectors description.

LBUS – Data contact for LBUS line connection;

GND – Common ground (Do not connect to protective earth!);

K1, K2 – Entry side reader data for Door 1 and Door 2;

LG1 – Door 1 green reader light;

LG2 - Door 2 green reader light;

LR1 - Door 1 red reader light;

LR2 - Door 2 red light reader light;

SP1 – Door 1 reader beeper;

SP2 - Door 2 reader beeper;

NO1, CK1, NC1 – Normally open, common and normally closed relay contacts for Door 1;

NO2, CK2, NC2 – Normally open, common and normally closed relay contacts for Door 2;

TMP – Tamper switch;

D1 – Door 1 opening sensor;

D2 – Door 2 opening sensor;

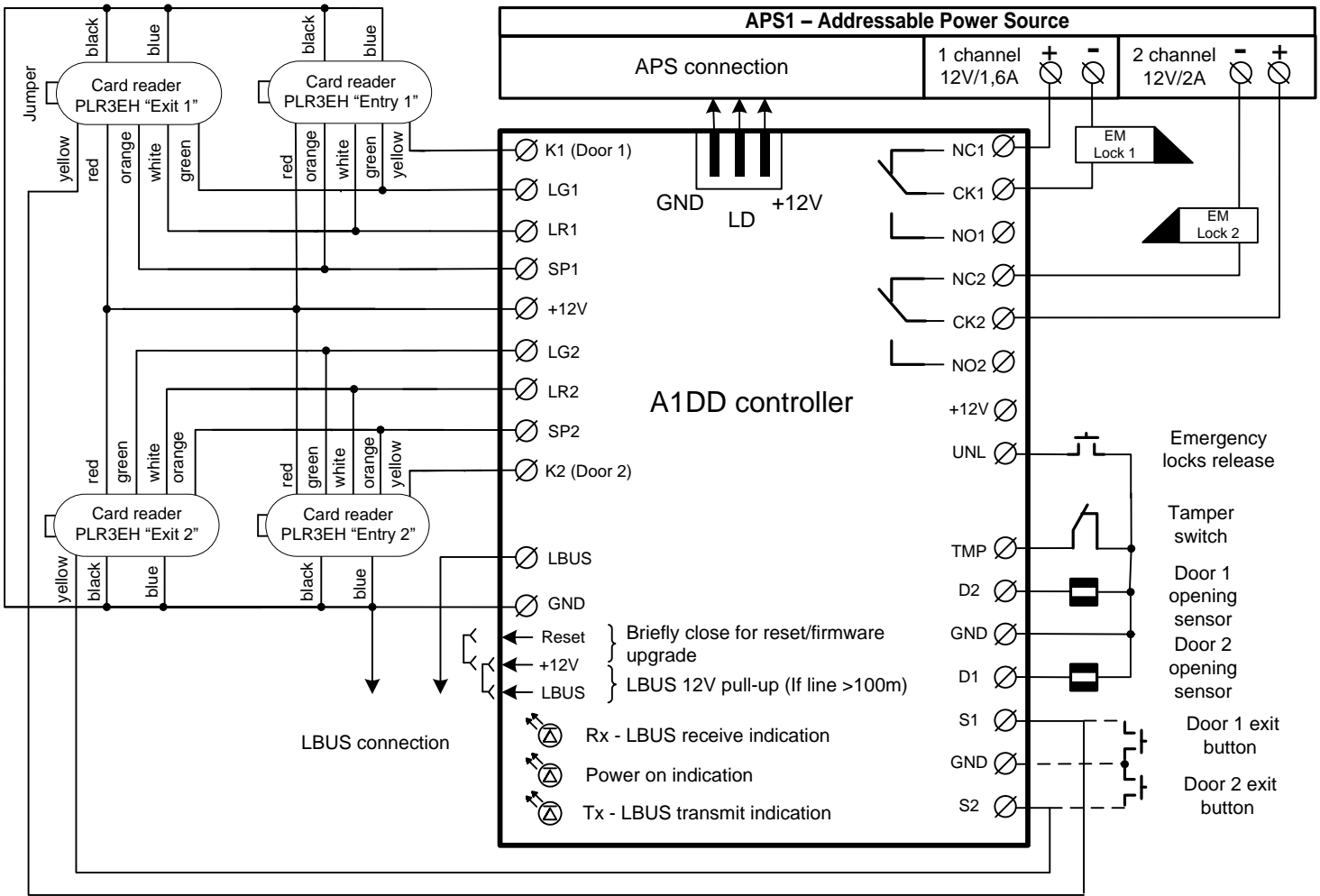
S1 – «Exit» button 1/exit side reader data for Door 1;

S2 – «Exit» button 2/exit side reader data for Door 2;

UNL – Emergency lock release;

+12V – Key readers power output.

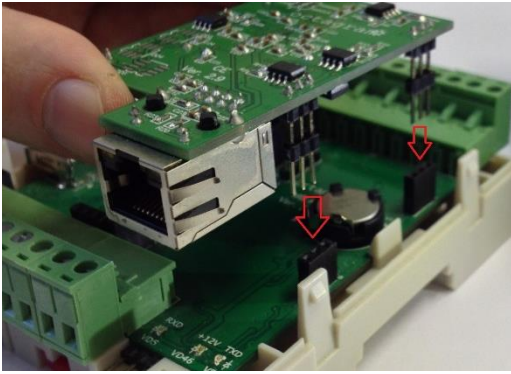
4. Connection scheme.



Note: wire TMP – GND if you are not using tamper switch.

5. CEM hub installation.

Remove upper part of controller housing and place CEM onto the four black connectors as shown below:

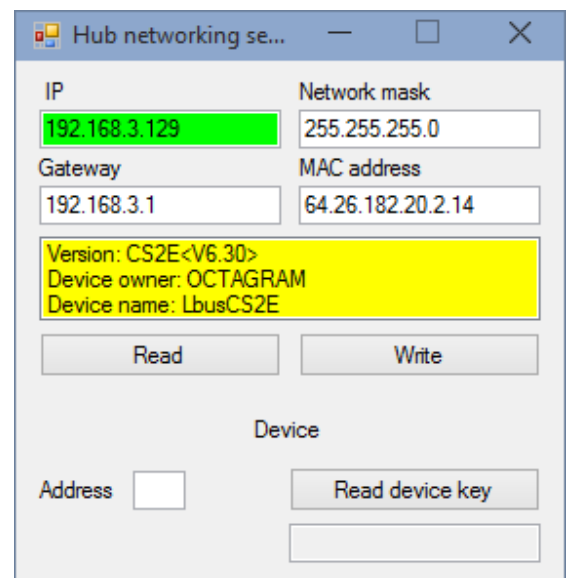
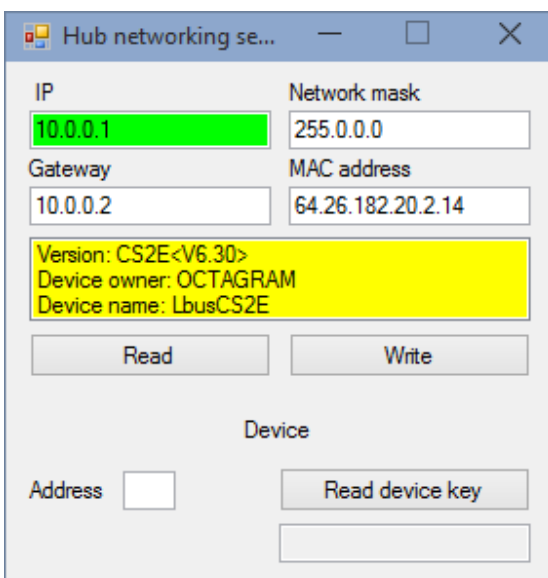
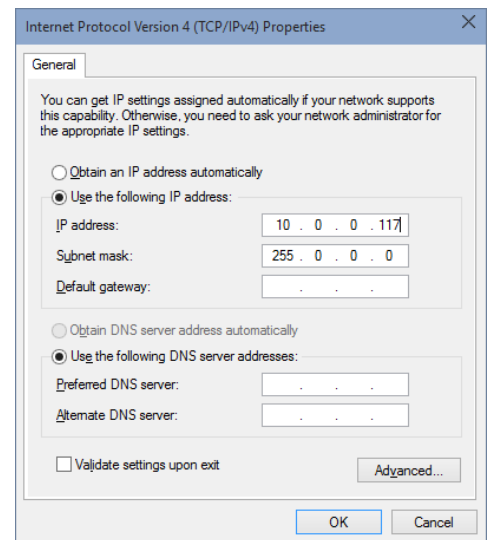


6. CEM setup.

The standard CEM IP address is 10.0.0.1. To change it, use [HubIPChanger](#)

To change IP address:

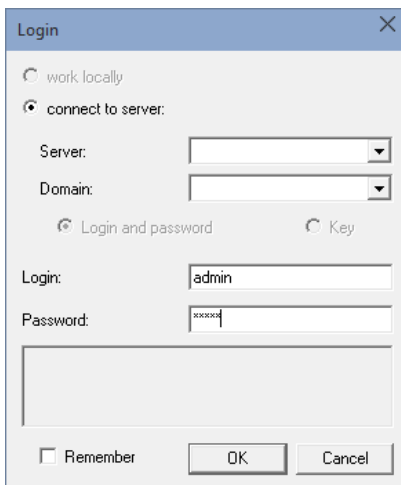
1. Setup your PC's NIC to use fixed IP 10.0.0.117 and netmask 255.0.0.0;
2. Connect CEM to your PC Ethernet port;
3. Turn on your A1 controller;
4. Start HubIPChanger and press «Read»;
5. Set new IP address, netmask and gateway;
6. Press «Write» to apply new settings;
7. Restore your PC NIC settings if necessary.



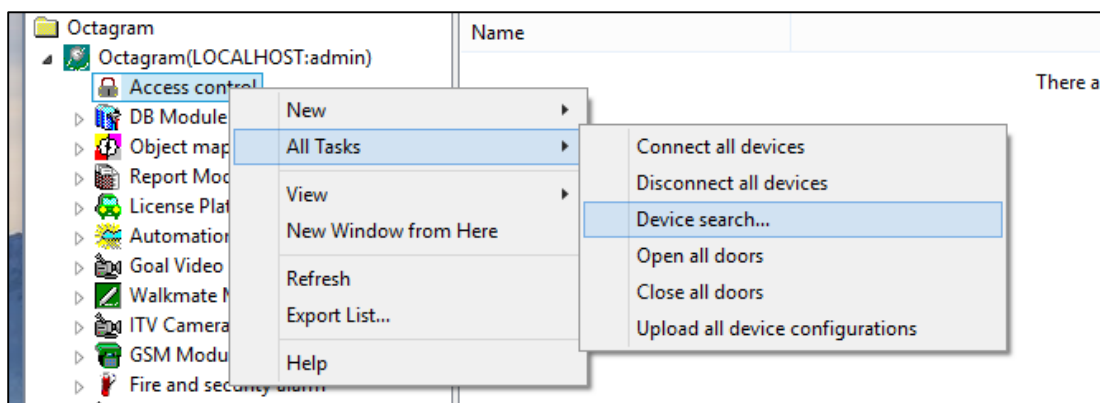
7. Octagram Flex.

Start Octagram Flex from shortcut on your Desktop, to login use:

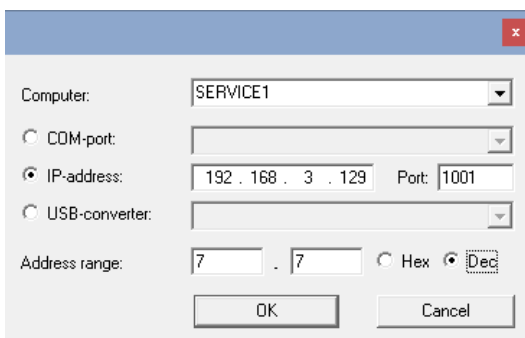
Login: admin. Password: admin. Leave fields «Server» and «Domain» empty.



Left click «Access control» module, select «All Tasks» -> «Device search...»:



In search window set IP address and controller address range:



For faster search, set known controller address in both «address range» fields and press «Ok».

You can find controller address on its backside, address shown in decimal system from 1 to 255.

Search progress bar will be displayed in new window.

Two new controllers will be added to Access control module, representing door 1 and door 2:

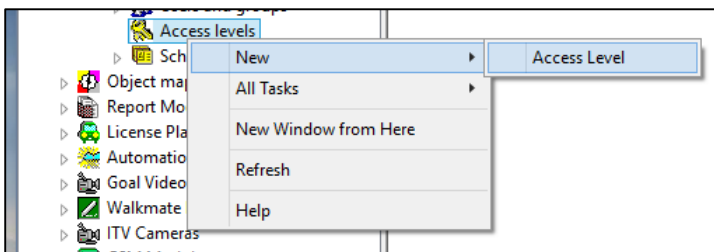


You can rename controllers if necessary, by pressing F2 key or right click and Rename.

8. Access levels.

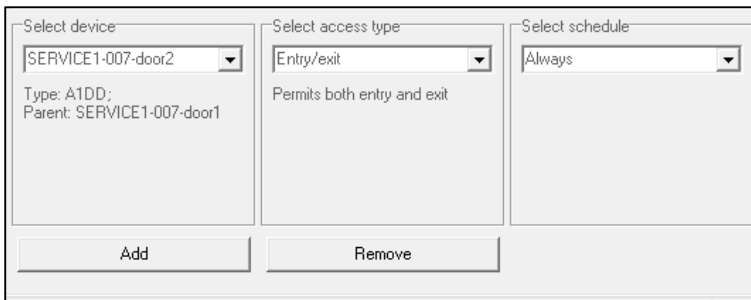
Access levels define access rights sets for users and groups.


To create access level: go to DB Module\Default DB, right click «Access levels» -> «New -> «Access Level»:



In lower part of new window:

- Click «Add»;
- Select device (controller);
- Select access type: Enter/Exit;
- Select schedule «Always»:



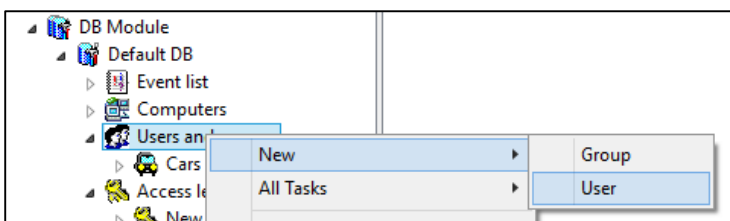
Save access level by pressing «» toolbar button. You can rename created access level, by pressing «F2» key.

You can add second controller in to the same access level or create new one for it.

9. Creating new user.

To add Card key you need create a user.

Go to «DB Module\Default DB», right click «Users and groups», in pop-up menu: «New -> User».



New window with user properties will open:

You can add name and other information about user here.

The screenshot shows a 'New user Properties' dialog box with the following fields and values:

- SID: S-1-47C3214F-7AA7-4dfd-85EF-3F86EB321209
- First Name: (empty)
- Middle Name: (empty)
- Last Name: New user
- Recognize: (button)
- Table Number: (empty)
- Address: (empty)
- Aapiec: (empty)
- Comment: (empty text area)
- Creation Time: 3/10/2015 4:34:26 PM
- Modification Time: 3/10/2015 4:34:26 PM

Buttons at the bottom: OK, Cancel, Apply.

Go to the «Key» tab, if you have USB Z-2 key reader connected, press «Read Key...», in new window select «IronLogic USB Z-2», and put your proximity card on USB Z-2 reader until it beeps. Window will close and card number will appear.

You can also type in key number yourself: check «Dec» radio button and type in new key number.

Go to «Access levels» tab and select access levels that you created:

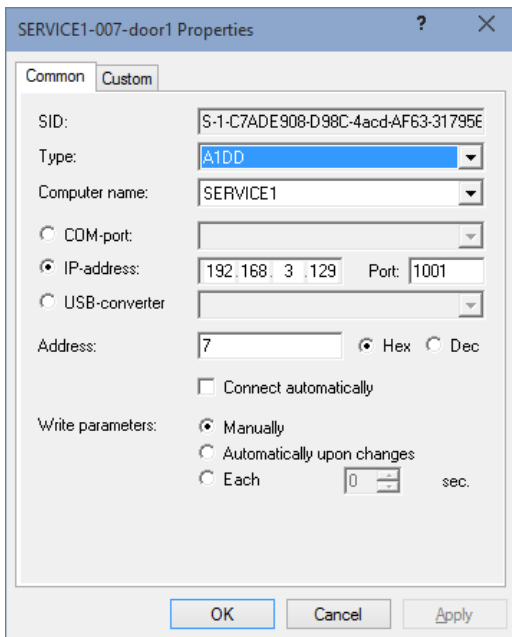
The screenshot shows the 'Access Levels' tab of the 'New user Properties' dialog box. The title is 'Access levels for user "New user"'. A list contains one item: 'New level' with a checked checkbox.

Click «Ok» to save user properties and close window.

You can also create group for users and select access levels for group. Any users created in it will use group access levels by default.

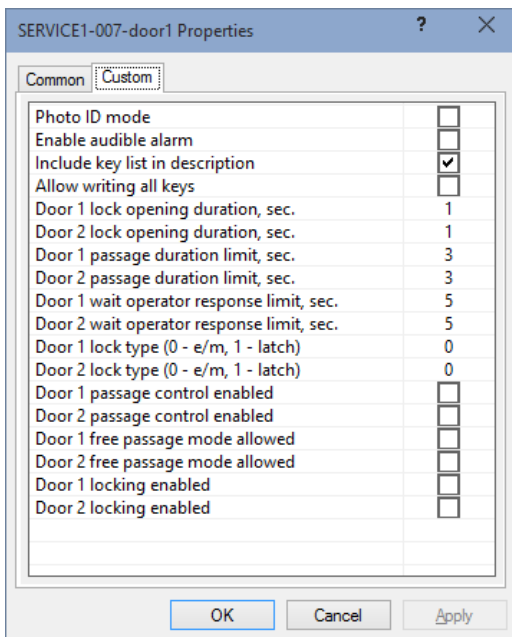
10. Controller properties.

To change controller properties: go to «Access module», right click on controller and select «Properties»:



«Connect automatically» – Set this flag if you want to connect to controller when server starts.

Go to «Custom» tab:



Set lock types for both doors, 0 – electromagnetic lock, 1 – electromechanical lock or latch.

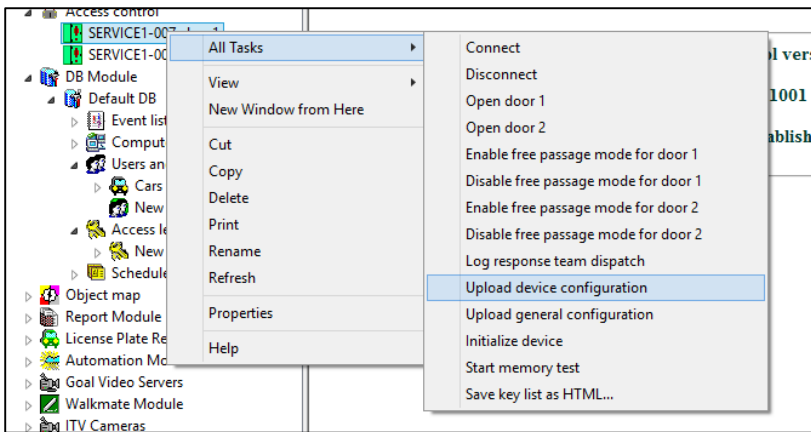
Set locks opening durations in seconds: from 1 to 255 for electromagnetic locks and from 0,1 to 0,9 for electromechanical locks or latches.

Check Door 1 and 2 passage control enabled box if you use door opening sensors.

When you are done, click «Ok» to close window.

To apply settings and upload them to controller you need to upload configuration:

Right click on controller, select «All Tasks» -> «Upload device configuration»:



Upload progress is shown on controller status screen.

When upload completes, your controller is ready to use.

Commands to operate the controller are available through «All Tasks» menu.

In DD type controller you don't need select different virtual doors to control them, they share properties and commands, they need only to create different access levels for each door.

Since both doors of A1DD are on the same physical device, commands for both doors are available from each door's pop-up menu.